

EMPLOYMENT OF DISABLED PEOPLE



WHO HELPS THE DISABLED FIND JOBS?



- THE STATE EMPLOYMENT AGENCY
- KVOTA



Zavod Republike Slovenije
za zaposlovanje

Employment Quota



Quota

More than 20 employees

Quota is different for each field of work

Quota is between 2 and 6% of all people employed



Example

100 employees

Quota is 3% (for education)

3 employed disabled persons

Fee of 1.650,00€



Formula

$$70\% \times 805 \times 3 = 1.650,00\text{€}$$

70% - of the minimal wage

805,00€ – minimal wage

3 – amount of disabled employees missing



REHABILITATION

- THE DISABLED HAVE THE RIGHT
- THEY NEED IT IN ORDER TO GET A JOB
- EVALUATION



SOCIAL INCLUSION PROGRAMS



- PROGRAMS TO SUPPORT AND ENCOURAGE THE DISABLED
- OBTAIN NEW SKILLS AND KNOWLEDGE



ŠENT

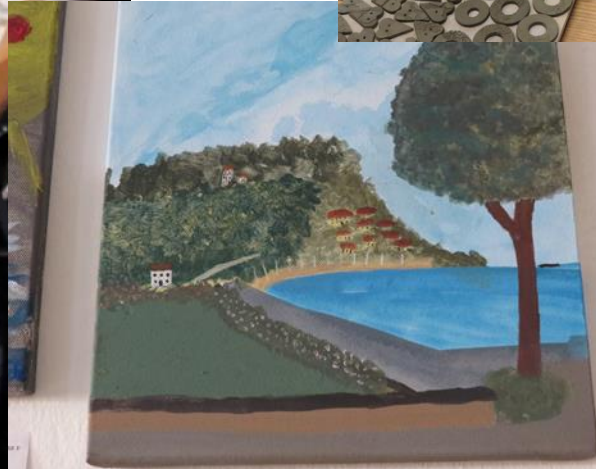
SLOVENIAN ASSOCIATION FOR THE MENTAL HEALTH



- WORK CENTERS
- RESIDENTIAL GROUP
- SOCIAL INCLUSION







WHO DOES THIS BENEFIT?

THE EMPLOYER

- MEETING THE KVOTA
- TAX RELIEF



THE EMPLOYEE

- FINANCIAL BENEFIT
- INCLUSION



COMPANIES FOR THE DISABLED



- IT IS NOT EASY TO FIND JOBS
- SLOVENIA 166 COMPANIES

